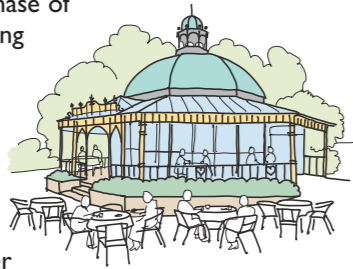


# WELCOME TO VALLEY GARDENS

Harrogate's Grade II listed, award winning garden was originally simply a footpath beside a stream from the Royal Pump Room to Bogs Field where there are thirty-six different mineral wells. Valley Pleasure Grounds were opened in 1887. The gardens were extended by the purchase of 'Collins Field' in 1901 creating an area of 17 acres.

## New Magnesia Well Pump Room <sup>3</sup>

Originally built in 1895 to serve Spa mineral waters from the Magnesia and other wells, now Ripley Ice Cream & Café.



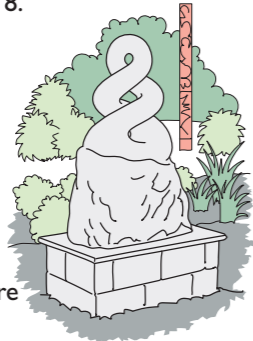
## Japanese Garden 'Shijima no niwa' <sup>5</sup>

The original Japanese Garden existed in the 1930s. Friends of Valley Gardens, (with help from the National Lottery Heritage Fund, Harrogate Borough Council, the Japanese Garden Society and many other individuals and organisations) have restored this 'Garden of Serenity'. It was reopened by the Japanese Ambassador in 2018.



## New Zealand Garden <sup>21</sup>

Created in 1954 with plants from Harrogate's 'twin city' Wellington to honour twenty three WW2 airmen from New Zealand buried in Stonefall Cemetery. The Maori pou whenua was added in 2010, the Yorkshire Stone Pikorua sculpture and commemorative bench in 2023.



## Old Magnesia Well Pump Room <sup>18</sup> & Peat Garden <sup>17</sup>

Opened in 1858, this Grade II listed Gothic style building served magnesia water from the adjacent well until replaced by the New Magnesia Well Pump Room in 1895.



Restored by Friends of Valley Gardens (with help from funding organisations and volunteers), this building contains an Information & Education Centre explaining the history of Valley Gardens - see our website for opening hours. The rock garden in the surrounding Peat Garden hides a magnesia water reservoir.

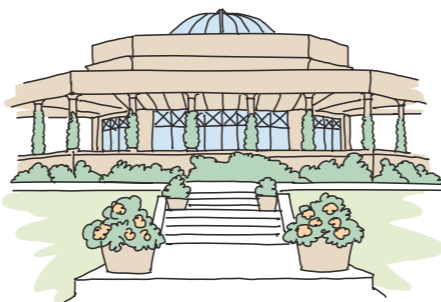
## Sun Pavilion <sup>23</sup>, Sun Colonnade <sup>25</sup> & Bandstand <sup>24</sup>

These three buildings all date from 1933.

The Sun Pavilion was originally a very elegant café. It fell into disrepair but was rescued by the original Friends of Valley Gardens with a Lottery Heritage Grant and was reopened by the Queen in 1998. It is now a favourite wedding venue.

The Sun Colonnade roof was fully glazed and provided a partly covered walkway from the Royal Bath Hospital to the Royal Pump Room. This elegant arcade is bedecked with Wisteria and Hydrangea.

The Bandstand's shell design protects the musicians from the weather and provides good acoustics. Bands play here on most Sunday afternoons in summer.



# VALLEY GARDENS HARROGATE

Valley Gardens is open all year round.

Valley Gardens is at **HGI 2SZ** in the centre of Harrogate, a pleasant, short walk from Harrogate bus and train stations. The main entrance is facing the Royal Pump Room Museum on Royal Parade. Other entrances are on Cornwall Road and the **King Edward VII Memorial Gate <sup>9</sup>** (restored by Friends of Valley Gardens) on Valley Drive. On street disc parking is available on Cornwall Road and Valley Drive.

**Valley Gardens include:** children's playground, paddling pool, picnic areas, boating pond, skateboard park, tennis courts, pitch & putt and crazy golf.

Valley Gardens is owned and managed by North Yorkshire Council  
[www.visitharrogate.co.uk/gardens](http://www.visitharrogate.co.uk/gardens)



Reg. Charity No: 1148369

Friends of Valley Gardens (FOVG) produced this guide. We are a voluntary group who work with North Yorkshire Council to restore, maintain and enhance Valley Gardens, raise funds, support the council gardeners with volunteer help and offer guided tours to groups.

New members are always welcome.

For more information please visit

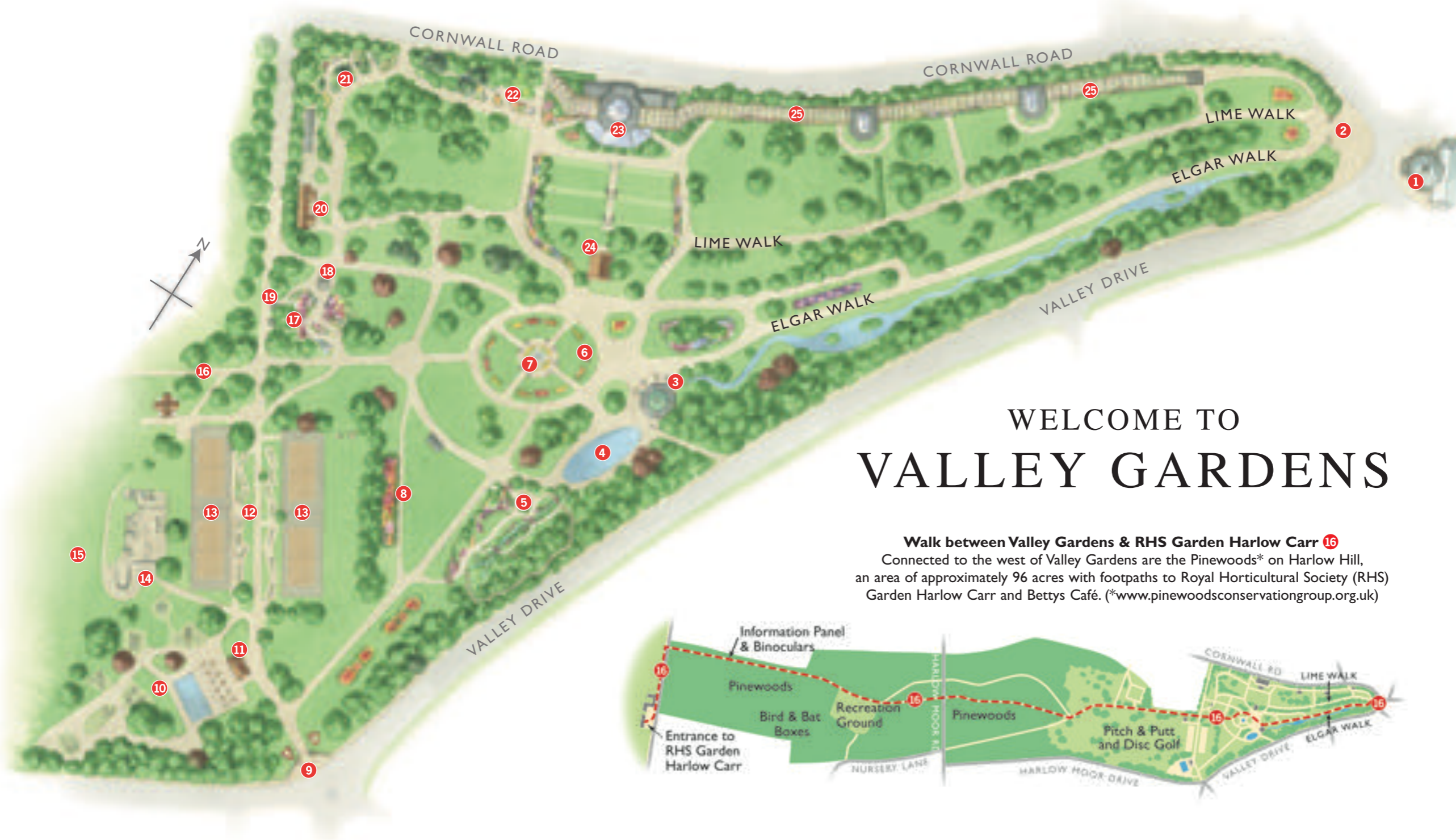
[www.friendsofvalleygardens.co.uk](http://www.friendsofvalleygardens.co.uk)

or email [fovg@friendsofvalleygardens.co.uk](mailto:fovg@friendsofvalleygardens.co.uk)



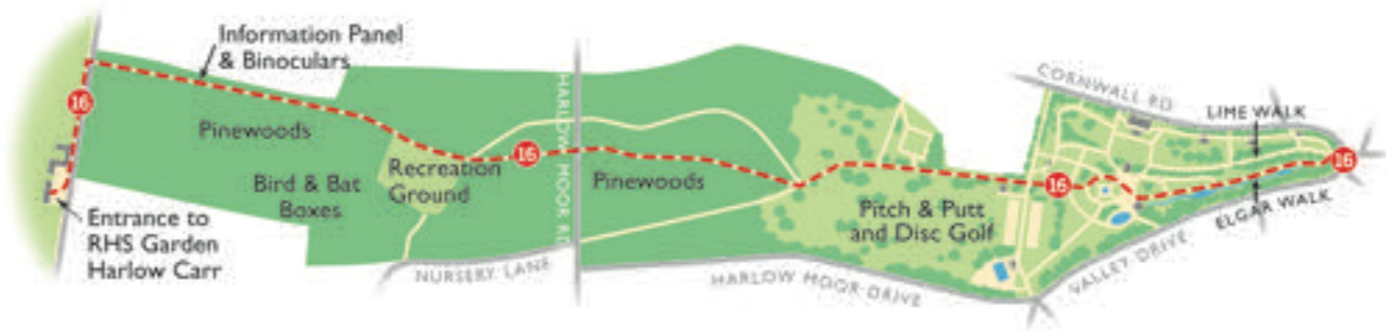
# VALLEY GARDENS HARROGATE





# WELCOME TO VALLEY GARDENS

**Walk between Valley Gardens & RHS Garden Harlow Carr 16**  
 Connected to the west of Valley Gardens are the Pinewoods\* on Harlow Hill, an area of approximately 96 acres with footpaths to Royal Horticultural Society (RHS) Garden Harlow Carr and Bettys Café. (\*[www.pinewoodsconservationgroup.org.uk](http://www.pinewoodsconservationgroup.org.uk))



## KEY TO MAP

- 1 Royal Pump Room Museum
- 2 Main Park Entrance
- 3 New Magnesia Well Pump Room (Ripley Ice Cream & Café)
- 4 Boating Pond
- 5 Japanese Garden
- 6 Bogs Field
- 7 Cherub Fountain
- 8 Dahlia Beds (seasonal)
- 9 King Edward VII Memorial Gate
- 10 Children's Playground & Paddling Pool
- 11 Game Pavilion, WCs & Refreshments
- 12 Crazy Golf
- 13 Tennis Courts
- 14 Skate Park
- 15 Pitch & Putt Golf
- 16 Footpath to Pinewoods & RHS Harlow Carr
- 17 Peat Garden
- 18 Old Magnesia Well Pump Room
- 19 Magnesia & Chalybeate Wellheads
- 20 Public Conveniences
- 21 New Zealand Garden
- 22 Scree Garden
- 23 Sun Pavilion
- 24 Bandstand
- 25 Sun Colonnade

